

# Employment Programmes

**Would you like to get back into employment?  
We have vacancies in Childcare, Environmental,  
Heritage and Administration.  
Consider joining our team.**



*Employment Programme Team*



*Engaging with clients at our Recruitment Fairs*

## Rural Social Scheme (RSS)

By participating on the Rural Social Scheme, local communities benefit from the workers' skills and talents by providing additional resources to maintain and improve local amenities and facilities. They can also experience opportunities to improve existing or develop new skills.

North Leitrim is fruitful in unique projects with three walkways, two organic biodiversity projects and two tourism projects. In South Leitrim, Margaret of New Orleans in Carrigallen has just purchased new premises to be set up as a

museum and visitor centre. The RSS has a Participant who archives documents and researches this amazing woman. The Irish Rare Breed Society is a new project for RSS with a Participant working with the Rare Breed National Organisation as well as collaborating with UCD.

To participate, an individual must be in receipt of one of an eligible Social Welfare payment such as Farm Assist, Jobseekers Allowance and Disability Allowance etc. The individual or a family member must also have access to an active Herd Number.

# Heritage, Health & Safety and Walking Trails



*Our Tour Guide providing a tour of Kiltyclogher Heritage Centre*



*An annual safety induction with our team*



*Walking Trail at Sheemore*

# Community Employment Programmes

The Childcare CE Programme began over 25 years ago. Learners on this programme participate in the QQI Early Learning and Care at Level 5. The programme works in conjunction with the community childcare groups in the county. The programme runs training for 20 learners. Leitrim Development Company also manages the Environmental and Community Enhancement CE Programme with 40 Participants working in a variety of settings including heritage, befriending, administration, environmental and accounts. We also support our communities with their annual programme of activities. We encourage participants leaving Tús to engage with CE and RSS for

personal development. This has been a very successful professional strategy for participants. On CE we are always welcoming new participants onto the programme. We are very pleased and proud to work with the Ukrainian community and have had very successful placements.

Eligible clients must be getting an eligible Social Welfare payment for at least 12 months. Individuals can contact their local Social Welfare office to confirm eligibility and to be referred for a placement. Vacancies on CE are available to view on Jobs Ireland.



*Cullinary support at Rosebank Community Centre & Crèche*

# The Tús Programme

With a team of over 80 Participants, Supervisors, Administrators and a Co-ordinator, communities in the catchment area are supported county-wide. A standout initiative by the team was the rollout of the Knitters for Neo-Natal project. 2023 was the first year that the blankets were distributed to the beneficiaries.

Carrigallen Day Care was the pilot group to receive 16 specially crocheted blankets.

Eligible clients must be getting an eligible Social Welfare payment for at least 12 months. We welcome those who would like to self-refer for a position also.



*Recipients of the Tús Blanket Initiative*



# Capital Projects

## The Attic Memorial / Famine Graveyard (Tús/RSS)

The Supervisors were set a task by the Co-ordinator to work on some capital projects collectively across all programmes. One of the standout projects was the Famine Attic, which was a workhouse in Carrick on Shannon during the famine in 1842. The workhouse accommodated hundreds who sought refuge during the famine. They slept on bare floorboards with very little to eat. Many died of starvation and bodies were buried in the neighbouring famine graveyard. The building is of great historical interest

to the community and the Employment Programmes were proud to work on this project.

The original walls had to be treated with special care and attention. The team had to be mindful of the requirement for specialized materials to be used in order to maintain authenticity. The original timber floor area used as beds for the workers were sanded back to their raw material and treated as required. The Employment Programmes' RSS and Tús teams supplied the full labour and material costs.



*Proudly supporting our local groups including The Attic Memorial, Carrick on Shannon*



*St. George's, Carrick on Shannon*

## Capital Projects

### Lake at Carrigallen (RSS)

A new timber fence was erected by the team at the lake in Carrigallen. This has added a lovely element to the amenity

area and is now a lovely place for visitors and locals alike.



*Before*



*After*

## Working with External Agencies

Recruitment is an important part of our work. Working with our other counterparts, various government

agencies and getting out and about in the community is key to animating our programmes.

# Capital Projects

## St. Patrick's Church, Ballinamore (RSS)

Health and safety signage was erected to divert passersby around the entrances to the church. The powerwashing on the

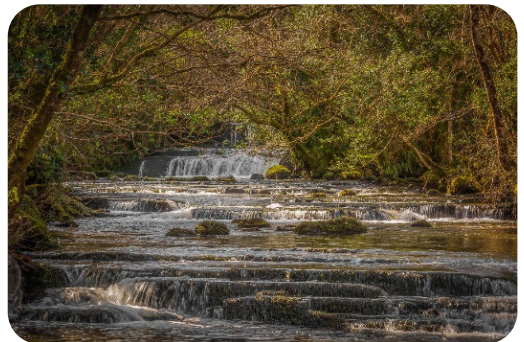
footpaths, steps and church entrances has made a tremendous difference, as commented on by the parishioners.



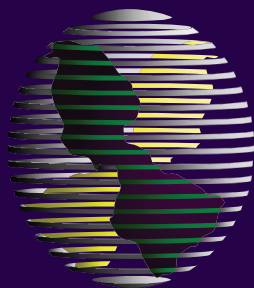
*Before*



*After*



*Caretaking and maintenance works at Fowley's Falls, Rossinver*



# Leitrim DEVELOPMENT company

*For further details on any of our Employment Programmes,  
please contact Karen Guihen or any member of the team below:*

**Contact:** Karen Guihen – Employment Programmes (*Co-ordinator*)  
**Company:** Leitrim Development Company,  
Church Street,  
Drumshanbo,  
Co Leitrim  
**Tel:** 071-9641770  
**Email:** [schemes@ldco.ie](mailto:schemes@ldco.ie)  
**Web:** [www.ldco.ie](http://www.ldco.ie)



An Roinn Coimisce Sóisialaí  
Department of Social Protection

